

Directions

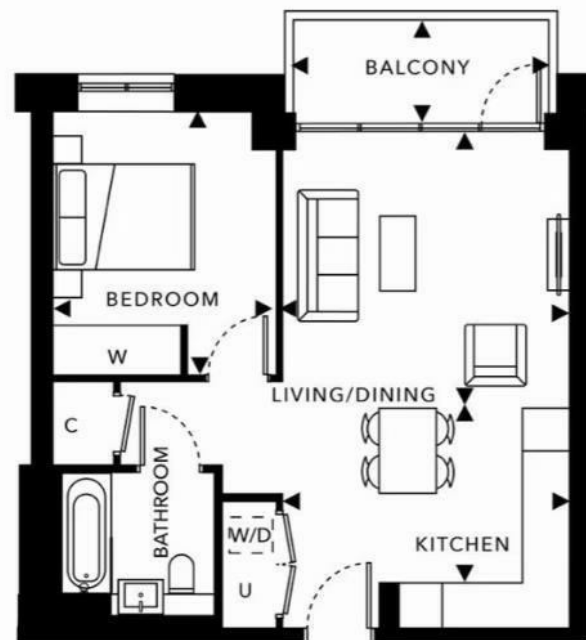
Viewings

Viewings by arrangement only. Call 02033696888 to make an appointment.

EPC Rating

B

Energy Efficiency Rating		Current	Potential
Very energy efficient - lower running costs			
(92 plus) A			
(81-91) B		85	85
(69-80) C			
(55-68) D			
(39-54) E			
(21-38) F			
(1-20) G			
Not energy efficient - higher running costs			
England & Wales		EU Directive 2002/91/EC	



Living Room	4.05 x 3.92 m / 13'3" x 12'10"
Kitchen / Dining	4.05 x 3.10 m / 13'3" x 10'2"
Master Bedroom	3.15 x 3.71 m / 10'4" x 12'2"
Total Internal Area	51.8 sq m / 557.3 sq ft
Balcony	3.60 x 1.49 m / 11'11" x 4'10"
Total Balcony Area	5.4 sq m / 58.2 sq ft



CN179-JC2309790, Flat 102 Alington House 1 Mary Neuner Road,
London, N8 0FS
£496 Per Week

Flat 102 Alington House 1 Mary Neuner Road, London

NO DEC

*** Please quote reference JC2309790 when contacting the office *** Available from 8th August***

Nestled in the vibrant heart of London, this modern flat on Mary Neuner Road offers a perfect blend of comfort and contemporary living. Spanning an impressive 603 square feet, this property is designed to cater to the needs of today's urban dwellers.

The flat features a well-appointed reception room, ideal for both relaxation and entertaining guests. The spacious bedroom provides a tranquil retreat, ensuring a restful night's sleep. The bathroom is stylishly designed, offering a refreshing space to unwind after a long day.

Built in 2021, this property boasts the latest in modern amenities and finishes, making it a desirable choice for those seeking a new home in the city. Its prime location means you are just moments away from a plethora of shops, restaurants, and public transport links, ensuring that everything you need is within easy reach.

Whether you are a first-time buyer or looking to invest in a rental property, this flat presents an excellent opportunity to enjoy the best of London living. Don't miss your chance to make this contemporary flat your new home.



Council Tax Band:

